



1 800 463 0546

Early Birds Your GM Muscle Car Headquarters

Visit www.early-birds.ca for most up-to-date
catalog this copy was generated March 29 2024

GTO / Body Panels / Quarter Panels & Parts

Picture	Product name	Description	SKU	CAD
	1964-1965 Quarter Panel (OE Style) - LH	64-65 Pontiac GTO OE style full rear quarter panels. Each reproduction panel is stamped from heavy-gauge steel on our exclusive new tooling and features correct as original lines, bends and curves.Oversized item, additional charges may apply	GTAM700-5464-L	1276.78
	1964-1965 Quarter Panel (OE Style) - RH	64-65 Pontiac GTO OE style full rear quarter panels. Each reproduction panel is stamped from heavy-gauge steel on our exclusive new tooling and features correct as original lines, bends and curves.Oversized item, additional charges may apply	GTAM700-5464-R	1276.78
	1964-1972 Quarter Panel Rubber Vent	64-72 RUBBER VENT, This is a rather large square hooded rubber grommet plug found under the rear quarter panel of most GTO's & 69-70 GP's.	GTPYRPT35G	19.20
Early Birds Order Hotline: 1 800 463 0546				
	1966 FULL QUARTER PANEL - LH	This full quarter panel has been manufactured to duplicate the original in both fit and appearance	GTD1590L	1135.00
	1966 FULL QUARTER PANEL - RH	This full quarter panel has been manufactured to duplicate the original in both fit and appearance	GTD1590R	1135.00
	1966 Lower Rear Quarter Panel Patch - LH	This is a premium Quality US made product. Heavy gauge metal is used to meet factory specs. Fit and finish is far superior to the off shore brand.	GTCRGT66L	255.98
	1966 Lower Rear Quarter Panel Patch - RH	This is a premium Quality US made product. Heavy gauge metal is used to meet factory specs. Fit and finish is far superior to the off shore brand.	GTCRGT66R	255.98
	1966-1970 GM A-Body Rear Inner Quarter Drain Plugs - 2PC	GM A-body GTO, 442, GS Rear Quarter Panel drain boxes 2pc. These are the box like plugs that go into the inner quarter panel to drain the trunk to quarter area. There is one on each side of the car. These snap in place against the inner quarter. When your car was new the body was dipped into a black or red color dye and these holes in the quarter allowed the fluid to drain. The covers then sealed over the holes and allow any water that	GTITINL10843	33.60

became trapped to drain. Over the years these are missing and dry rotted. These are exact to the factory originals in the correct black rubber with inner flap. This is an exact reproduction of the originals.



1967 Full Quarter Panel (Convertible) - LH

Full quarter panel for convertible GTO/Lemans models.NOTE: GTD1590H
Over sized packaging may result in additional shipping charges.
Shipping charges will be advised before shipping.

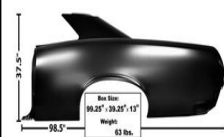
1476.00



1967 Full Quarter Panel (Convertible) - RH

Full quarter panel for convertible GTO/Lemans models.NOTE: GTD1590G
Over sized packaging may result in additional shipping charges.
Shipping charges will be advised before shipping.

1476.00



1967 FULL QUARTER PANEL - LH

This full quarter panel has been manufactured to duplicate the original in both fit and appearance GTD1591L

1110.00



1967 FULL QUARTER PANEL - RH

This full quarter panel has been manufactured to duplicate the original in both fit and appearance GTD1591R

1110.00



1967 Lower Rear Quarter Panel Patch - LH

This is a premium Quality US made product. Heavy gauge metal is used to meet factory specs. Fit and finish is far superior to the off shore brand.

GTCRGT67L

255.98



1967 Lower Rear Quarter Panel Patch - RH

This is a premium Quality US made product. Heavy gauge metal is used to meet factory specs. Fit and finish is far superior to the off shore brand.

GTCRGT67R

255.98



1968 Lower Rear Quarter Panel Patch - LH

This is a premium Quality US made product. Heavy gauge metal is used to meet factory specs. Fit and finish is far superior to the off shore brand.

GTCRGT68L

200.33

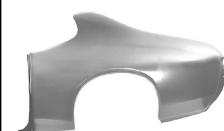


1968 Lower Rear Quarter Panel Patch - RH

This is a premium Quality US made product. Heavy gauge metal is used to meet factory specs. Fit and finish is far superior to the off shore brand.

GTCRGT68R

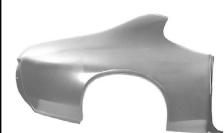
200.33



1968-1969 Full Quarter Panel (Weld Through Primer) - LH

Excellent quality reproduction manufactured to duplicate the original in both fit and appearance.NO side marker holes. Weld through primer GTD1593LWT

940.00


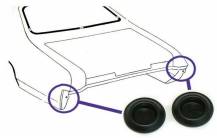

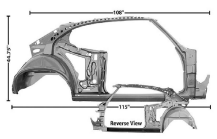
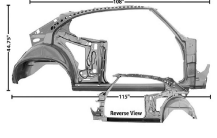
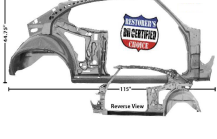
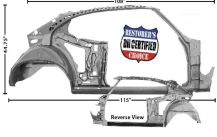





1968-1969 Full Quarter Panel (Weld Through Primer) - RH

Excellent quality reproduction manufactured to duplicate the original in both fit and appearance.NO side marker holes. Weld through primer GTD1593RWT

940.00



	1968-1969 GTO Quarter Wheel Flair/Arch - LH	High quality reproduction part made in the US from original heavy gauge steel. Edges are 3D laser cut for exceptionally smooth finish.	GTCRGT71L	155.81
	1968-1969 GTO Quarter Wheel Flair/Arch - RH	High quality reproduction part made in the US from original heavy gauge steel. Edges are 3D laser cut for exceptionally smooth finish.	GTCRGT71R	155.81
	1968-1969 GTO Rear Quarter Plastic Plugs - 2PC	1968-69 Pontiac, GTO Plastic Rear Inner Quarter Panel Plugs. We have seen these in both plastic and rubber, .75 Hole	GTITINL11091	5.04
	1968-1969 GTO Rubber Inner Quarter Panel Plugs - 2PC	1968-69 Pontiac, GTO Rubber Inner Quarter Panel Plugs. We have seen these in both plastic and rubber, .75 Hole	GTITINL11181	20.16
	1968-1969 Quarter/Door Frame Assembly (Weld Through Primer) - LH	Excellent quality reproduction manufactured to duplicate the original in both fit and appearance. Weld through primer	GTD1595WT	2087.00
	1968-1969 Quarter/Door Frame Assembly (Weld Through Primer) - RH	Excellent quality reproduction manufactured to duplicate the original in both fit and appearance. Weld through primer	GTD1594WT	2087.00
	1968-1969 Quarter/Door Frame Assembly - LH	Excellent quality reproduction manufactured to duplicate the original in both fit and appearance.	GTD1595	2503.00
	1968-1969 Quarter/Door Frame Assembly - RH	Excellent quality reproduction manufactured to duplicate the original in both fit and appearance.	GTD1594	2503.00
	1969 Lower Rear Quarter Panel Patch - LH	This is a premium Quality US made product. Heavy gauge metal is used to meet factory specs. Fit and finish is far superior to the off shore brand.	GTCRGT69L	200.33
	1969 Lower Rear Quarter Panel Patch - RH	This is a premium Quality US made product. Heavy gauge metal is used to meet factory specs. Fit and finish is far superior to the off shore brand.	GTCRGT69R	200.33
	1970-1972 GM Rear Blue Quarter Panel Plug And Orange Gasket - PR	Quarter Panel Drain Plugs Trunk - These are the drain plugs that snap into the lower quarter panel where the inner and outer lower quarter meet each other. These are for a 1" hole. Exact in every detail, right down to the colour and the gasket. The gasket colour is also correct. This is better than NOS. It is not shelf worn. Includes 2 plugs for both sides of the car and 2 gaskets. This is a brand new part.	GTITINL10355	26.88

Early Birds specializes in hard-to-find GTO parts and has been serving you for over 25 years.
Call us at 1 800 463 0546 Mon - Fri 9:00 AM - 4:00 PM (EST) - we know our cars!
Fax your order: (416) 630 8794

Our Mailing Address:
Early Birds
25 Saunders Road, Unit 9
Barrie, Ontario
L4N 9A7
Canada